

# Straight sliding door systems

## MA 40A® - MA 80A®

For doors up to 40 and 80 Kg



*High technology accessories :*  
Damper closer for the ultimate close



Damper closer system M66



hydraulic closer stop

### COMFORTABLE :

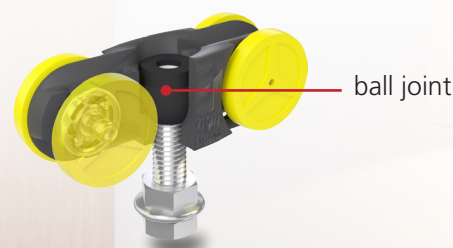
Damper closer system M66 and hydraulic closer stop in option

### SILENT:

Our new rollers have been designed and tested to offer and guarantee a silent and smooth rolling

### CLEVER:

Rollers equipped with a ball joint that improves the robustness of the system and adjusts to any mounting location defects





# Aluminum track system for straight sliding doors up to 80 kg - **MA**<sup>®</sup>

## COMPLETE SETS for doors up to 40 Kg

ITEM NR	Description	
<b>MA 40A-165</b>	Complete set for <b>40 Kg</b> doors comprising : - 1 aluminium track in 1.65 m length drilled every 0.44 m + Buly <sup>®</sup> (spirit level) - 2 rollers <b>MA 40A</b> and 2 plates <b>10036</b> - 2 adjustable stops - 1 guide <b>1103</b> - spanner, screws and assembly instructions	10
<b>MA 40A-190</b>	Ditto with a track of 1.90 m length	10
<b>MA 40A-240</b>	Ditto with a track of 2.40 m length	10

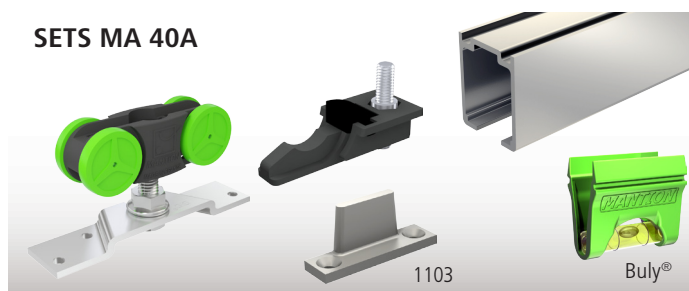
## COMPLETE SETS for doors up to 80 Kg

ITEM NR	Description	
<b>MA 80A-165</b>	Complete set for <b>80 Kg</b> doors comprising : - 1 aluminium track in 1.65 m length drilled every 0.44 m + Buly <sup>®</sup> (spirit level) - 2 rollers <b>MA 80A</b> and 2 plates <b>10036</b> - 2 adjustable stops - 1 guide <b>1103R</b> - spanner, screws and assembly instructions	10
<b>MA 80A-190</b>	Ditto with a track of 1.90 m length	10
<b>MA 80A-240</b>	Ditto with a track of 2.40 m length	10

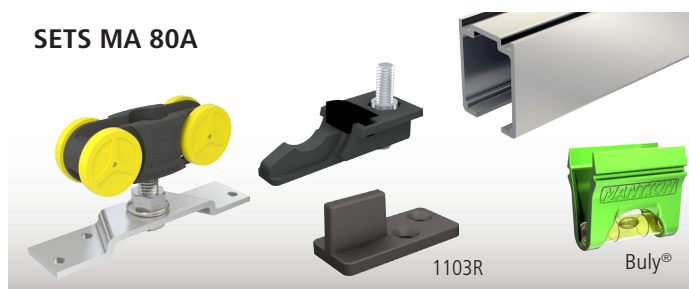
## ACCESSORIES

ITEM NR	Description	
<b>11213 S40</b>	Hydraulic door closer stop for doors up to 40 Kg ( <b>MA 40A</b> ).	10
<b>11213 S80</b>	Hydraulic door closer stop for doors up to 80 Kg ( <b>MA 80A</b> ).	10
<b>M66</b>	Damper closer system for gentle closing of doors (over 100 mm) Damper automatically follows door to its closed position. Suitable for <b>MA 40A</b> and <b>MA 80A</b> .	
<b>M66-40</b>	For adapting to an older <b>MA</b> system (max. 40 kg) with the M66 damper (delivered with a compatible <b>MA A</b> roller).	
<b>M66-80</b>	Ditto for doors up to 80 Kg.	
<b>1106/110</b>	Black PVC U-profile, 12x17, to be flush-mounted under the door. Improves door sliding performance. Suitable for 1103 and 1103R guides. Length = 1.10 m	
<b>11050-2</b>	Kit for 2 doors up to 80 kg each and max. comprising : - 2 assembled pulleys - 1 driving angle plate and 1 fixing angle plate with spring - 1 cable diameter 1.5 mm, length 10 m. (maximum opening : 2.2 m ) - screws and assembly instructions	
<b>2528</b>	Angle plate for wall-fixing of the <b>MA 40A</b> track, supplied with screws, nut and washer. Height = 17 mm - Length = 22 mm - Thickness 18/10.	25
<b>3538 D</b>	Angle plate for wall-fixing of twinned tracks <b>MA 40A</b> . Height = 34 mm - Length = 62 mm - Thickness 30/10.	
<b>2529</b>	Reinforced angle plate for wall-fixing of the <b>MA 80A</b> track, supplied with screws, nut and washer. Height = 23 mm - Length = 30 mm - Thickness 30/10.	
<b>1084</b>	End stop with rubber buffer - Screwing type.	10

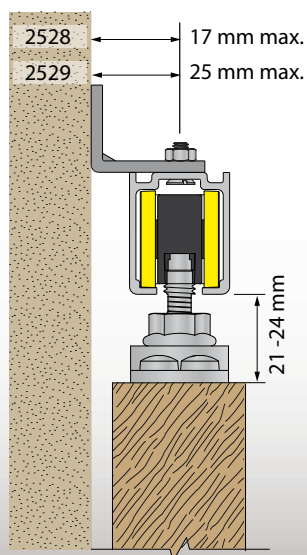
## SETS MA 40A



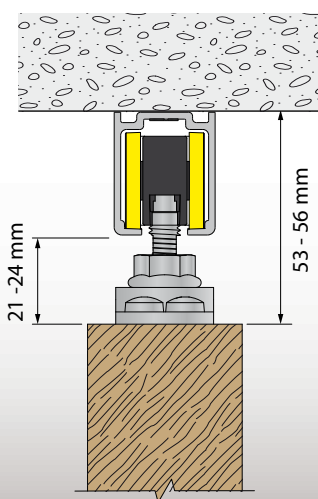
## SETS MA 80A



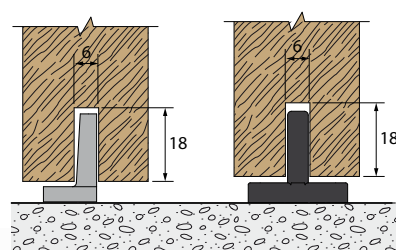
Fixing on the wall  
with a plate  
2528 (MA 40)  
or 2529 (MA 80)



Fixing on the ceiling



Guides 1103 and 1103R



Using U profile 1106/110

